

**NEW AGENCY.
OWNING YOUR FUTURE
IS NOT AN EXHIBITION.**

Hello. Welcome to *New Agency*, a research platform by Sibling Architecture that investigates the future of dwelling by looking at Australia's ageing population.

It asks: What will your future housing look like?

Over four weeks, *New Agency* transforms RMIT Design Hub into a live research platform, gathering data, public conversations, design speculation and feedback about what constitutes home ownership during the later stages of life. This opens up the field of architectural inquiry to a wider group of actors, shares mutual knowledge with participants and acknowledges architectural production as a collaborative enterprise.

Please keep this guide close as you enter the gallery to participate.

NEW AGENCY. OWNING YOUR FUTURE

RMIT Design Hub is proud to present *New Agency: Owning Your Future*—a project by Sibling Architecture focused on the link between ageing and the design of our future homes. *New Agency* considers the decisions we might make for ourselves today about where and how we will live as we get older, and who we will live with.

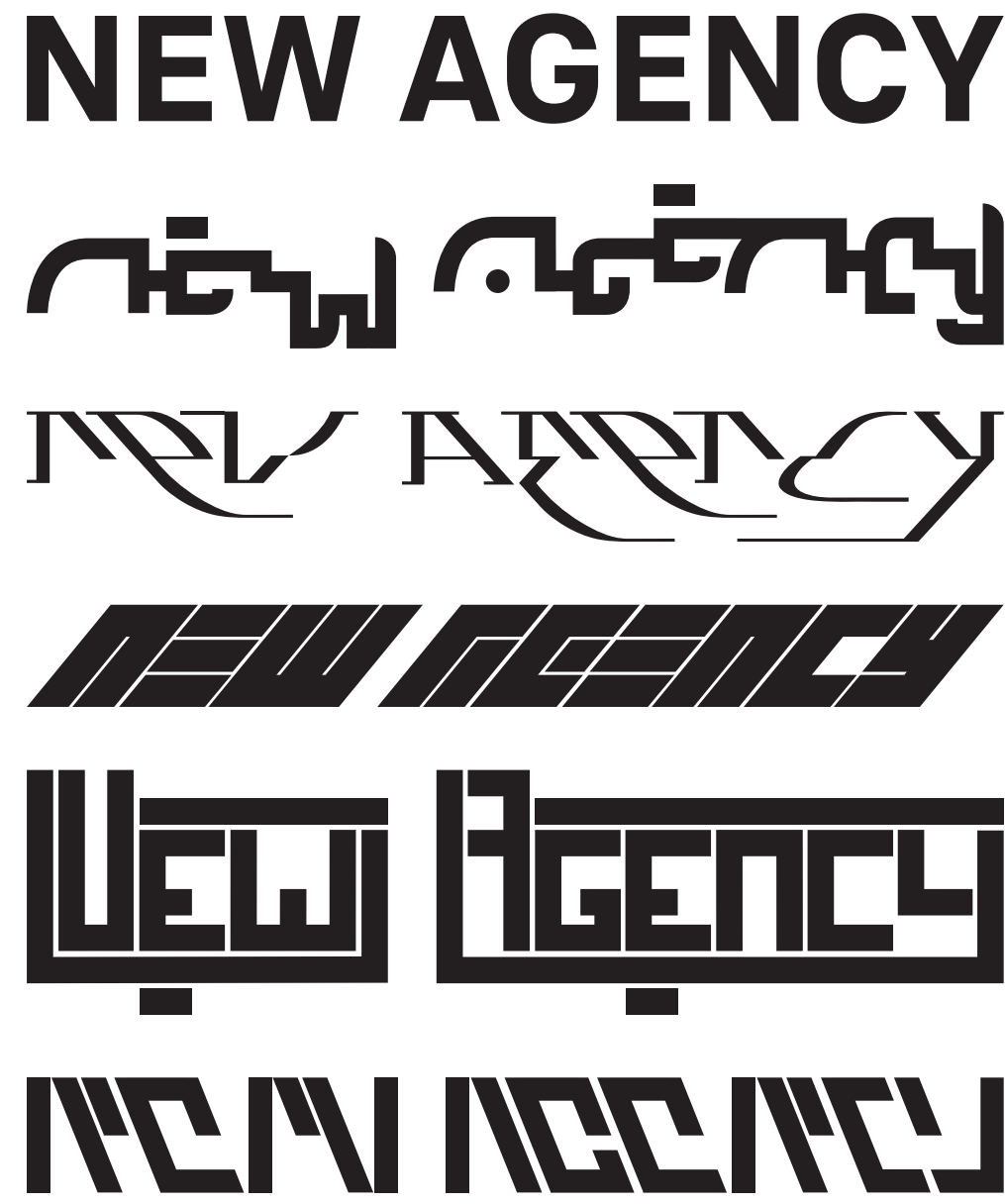
This project proposes that unless we have the valuable asset of a family home to fund our later years—or indeed, even if we do—we may consider living communally. Ensuring we are part of a community as we age might just prove to be the best insurance for quality care and relationships, while also helping us maintain an active mind and body. To test this hypothesis, *New Agency* is structured as a live research project and will take the form of a public investigation using Design Hub as a meeting place. This approach invites audiences to be active participants in Sibling Architecture's research, as they investigate and discuss future housing possibilities for an ageing population.

As a solo project, *New Agency* reflects on Sibling Architecture's practice—how the studio undertakes social enquiry, how it arms itself with expertise and how it uses the platform of an exhibition environment to test ideas and open up a conversation with the community, students and the general public. *New Agency* is the outcome of the studio's ongoing research into this complex field, and demonstrates how architectural practice can meaningfully contribute to discussions about social and economic issues.

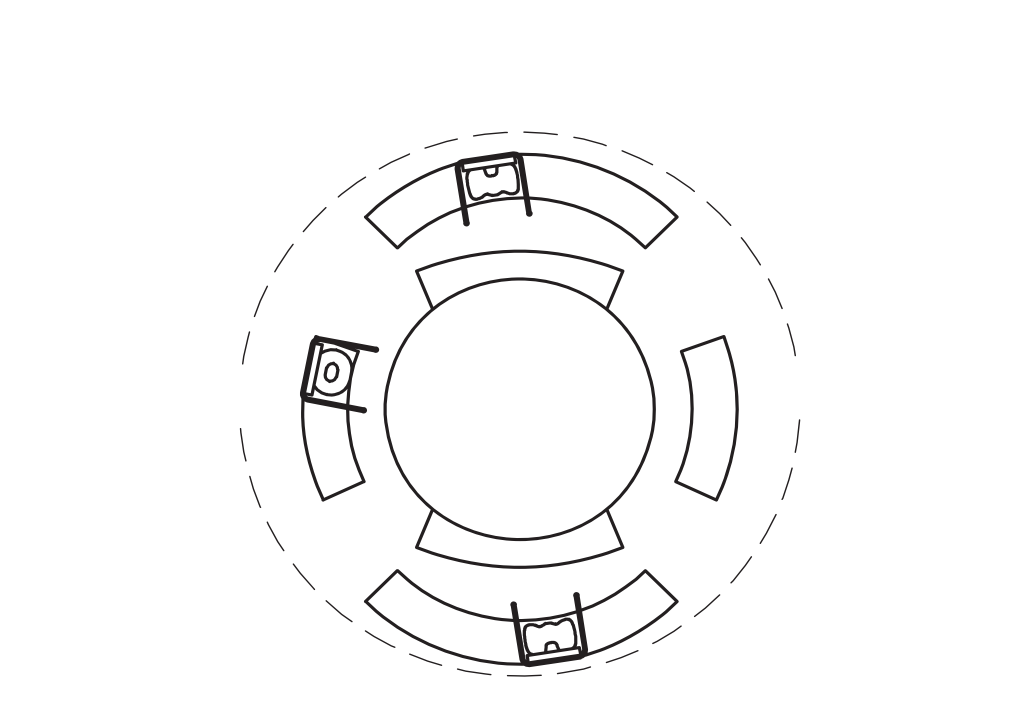
Kate Rhodes and Nella Themelios

Curators

RMIT Design Hub



OWNING YOUR FUTURE
SIBLING ARCHITECTURE
LIVE RESEARCH PROJECT



CHAMBER 01
LAZY SUSAN RESOURCE STATION

Welcome to Lazy Susan. Take a seat, have a spin, read all about it. Several case studies illustrating different concepts for how we might live together for longer, are located on the table for your perusal. The precedents explore building typologies and ownership models, plus more. Imagine how some of these ideas could become part of your own future.

THE NEXT INTERGENERATION

The presence of intergenerational households is a steadily growing trend in Australia since the 1980s, particularly within its capital cities. This has been driven by both social amenity and economic pressures.

In many other societies, intergenerational living is part of a culture that extends beyond the home to other public places in society. Synergies between different generations create richer and diverse environments and communities. How can we draw on these traditions to inform our own intergenerational future?

OCCUPATION—GET BUSY

As the average life expectancy rises in Australia, many of us will live well into our 80s. However, we may not be able to afford to support ourselves into an older age. With the current system of retirement, a typical Australian will not retire with enough superannuation, savings or the security of the home to sustain a 'comfortable' lifestyle.

Combined with the rising age requirements to be eligible for the Age Pension, this means that our working lives may likely extend well into our later stages of life. So, how will we be occupied in our future age?

LOGICAL FAMILY WHO DO YOU CHOOSE?

Australian society is embracing new family structures with the twentieth-century construct of the nuclear family no longer the status quo. The definition of family is not relegated to those that share a genetic or legal bond but may also include those that live together within the same household unit, share the same cultural values and extend to the wider community.

It's hard to predict who you would like to live with in your future age, but just think about what you value in your home and life, and the logical people that could share these with you.

TRANSIENT NETWORKS LIFE ON THE ROAD

A fall in home ownership no longer secures people to a single place. Being digitally connected, we can start to consider the concept of a transient network: where you are always on the move, but still connected back to friends, family and services.

How will driverless car technologies, the Grey Nomad lifestyle and other ways of mobile living inform a life on the road for our future age?

WHO DO YOU WISH TO GROW OLD WITH?
WHERE WILL YOU LIVE IN THIRTY YEARS TIME?
WILL YOUR HOUSE OUTLIVE YOU?
WHAT WILL HAPPEN IF YOU LIVE FOREVER?
DO YOU HAVE GENEROUS PARENTS?
DO YOU REMEMBER WHEN YOU HATED CAPITALISM?
WILL SUPERANNUATION SAVE YOUR FUTURE?
IS ALEXA OR SIRI YOUR NURSE?
WHAT ARE NEW FORMS OF KINSHIP?
HOW WILL CLIMATE CHANGE INFLUENCE WHERE YOU LIVE?
WILL YOU SHARE YOUR HOME WITH STRANGERS?
WHAT KIND OF ANCESTOR DO YOU WANT TO BE?
IS THE DEMAND FOR PUBLIC HOUSING ON THE RISE?

New Agency: Owning Your Future
Exhibition dates:
August 29—September 22, 2018
Curators and Exhibition Designers:
Sibling Architecture
Curatorial Assistant:
Timothy Walsh
Graphic Design: Lloyd-Mst
Video Editor: DLA-ALM
Sound Design: Yama Indra
Information Technologist:
Adam Hammad

Thank you to Jan Braun,
Juergen Braun, Ross Paxman,
Emile Zile, Samuel Torre and family
(Jenny and Paul Torre, Lawrence
Butcher) and Creative Victoria.

RMIT Design Hub is
a progressive educational
environment. It houses a
community of architects,
designers, curators and students
for collaborative,inter-disciplinary
design research and education
within a purpose-built, 10-storey
building that also includes RMIT
University's School of Architecture
& Urban Design and the RMIT
Design Archives. The Project
Rooms at Design Hub exhibit
creative, practice-led research and
are open to everyone. Exhibitions
at Design Hub visualise, perform
and share research ideas and make
new research connections.

RMIT University
acknowledges the Kulin Nations
as the Traditional Custodians of
the land on which the University
stands. The University respectfully
recognises Elders both past,
present and emerging. RMIT also
acknowledges the Traditional
Custodians of lands across
Australia where it conducts its
business, their Elders, Ancestors,
cultures and heritage.

CHAMBER 02
THE GUIDED VISUALISATION LOUNGE

We're glad that you are still with us. Locate a set of headphones, lie down, relax. Listen to the guide as they take you on a journey towards your future. Don't forget to breathe along the way. One, two, three...

_Take a break for a second.
5 SECOND PAUSE
_Welcome to your future.
Please lie down, on your back,
arms loosely at your sides.
_Close your eyes.
~Peaceful background music~
5 SECOND PAUSE
_Breathe in.
_And out.
_And in.
_And out.
_Let your body relax, your
physicality drift away.
5 SECOND PAUSE
_Think of the people who
mean most to you.
5 SECOND PAUSE
_Imagine them all together.
_Where would this be?
_On a dancefloor?
_An outdoor lunch on
a summer afternoon?
_Sitting around a campfire?
5 SECOND PAUSE
_Do they get along?
5 SECOND PAUSE
_Who would you take to a desert
island? Or on a mission to Mars? Who
would be ideal fellow contestants in
your own Big Brother household?
10 SECOND PAUSE
_Now, imagine 10 years into the
future, the year 2028.
_How old are you?
_Where are you?
10 SECOND PAUSE
_Remember, this is your vision. It can
be anything you want it to be.
5 SECOND PAUSE
_Imagine now where you are living.
10 SECOND PAUSE
_Imagine your favourite people live
with you too. What would this look
like? How much distance do you
need from each other?
5 SECOND PAUSE
_What kinds of things do you
like to do together?

5 SECOND PAUSE
_Are there children living with you?
5 SECOND PAUSE
_Are there people coming and
going? Are YOU coming
and going? Where?
10 SECOND PAUSE
_Now, imagine 30 years into the
future, the year 2048.
Developments in gene modifications
and health technologies are
expanding life expectancy.
_How old are you?
_Where are you?
5 SECOND PAUSE
_It may be that you spend more
time in the metaverse (collective
virtual shared space), than
the physical realm.
Connected, automated vehicles
may help distance to collapse.
_You are still living with your
favourite people—you are all a lot
older now. How has your
lifestyle changed?
10 SECOND PAUSE
_What kind of community/
neighbourhood will you be a part of?
5 SECOND PAUSE
_Who will care for you?
5 SECOND PAUSE
_Remember, this is your vision. It
can be anything you want it to be.
5 SECOND PAUSE
_Slowly, bring your awareness
back to your breath.
_Breathe in.
_And out.
_And in.
_And out.
_In your own time, start to notice
your body, the world around you.
_When you are ready, open your
eyes and sit up.
You are now ready to
progress to Chamber 3.
~Peaceful background music fades~

Hello again. Welcome back to the catalogue. Do you know people are living longer today than ever before? The life expectancy of human beings has almost doubled in the last hundred years (from 40 years of age to 80), with Australia seeing one of the highest life expectancies in the world. Twenty-one percent of Australians will be over 65 by 2053, while an active new category of over 85s is currently emerging. This puts pressure on our community to address the varying experiences of our elders – around issues of civic participation, medical care, pensions, public space, entertainment, accessibility – along with housing to respond to emerging leisure and medical needs. In the future, those of an older age may face a new age of housing typologies, lifestyle habits, home ownership models and care facilities.

As the retirement of Australians relies upon the asset of the family home (with superannuation), and as home ownership is becoming an impossibility for a huge swathe of younger Australians, how does this influence future models of living for the elderly, including financing aged care, retirement and intergenerational wealth? What can one learn from upwardly mobile grey nomads, multi-generational living or enclaves of like-minded people? What models of home ownership can adapt to the maturing of society and a changing market economy?

Complete the survey so that Sibling Architecture can answer these questions.

To complete on your personal device:
www.siblingnation.net/newagency

Sibling Architecture is a
collaborative architecture practice
that works across a range of
scales and sectors—but always
with an emphasis on the civic.
The practice has a research focus
that considers how changing
technologies and societal shifts
affect the types of spaces and
institutions we inhabit; the way
people interact with them; and how
they can be more inclusive.

The social, for Sibling, is a
sphere where different people
and things come together to form
something larger—a project,
a community—even if they are
different ages, abilities, genders,
classes or ethnicities.

Sibling's interest in how
ageing trends may influence our
built environment is a logical
extension of these preoccupations,
given it is inevitably an experience
shared by all. This research interest
initially began with a day-long
symposium at MPavilion in 2017.
One important question emerged
from that day: what do we want
our possible futures to be given
we are suspended in the 'gig
economy' and we won't be able to
cash in on our house or our meagre
superannuation for retirement?

This question continues to
resonate because design research
into ageing is an investment in our
own future quality-of-life, as
well as Sibling's.

Lloyd-mst is a graphic
designer who's practice is built
with foundations of ideation, play,
experimentation and research.

Working across different
mediums, his projects explore the
cyclical nature of materials and
the tension of hierarchy between
form and content. His practice
can come in various guises, but is
often achieved through dynamic
collaborations that spur and
celebrate the exchange of ideas.

CHAMBER 03
THE INTERVIEW SITUATION

We would like to know what you think. Sibling Architecture is conducting a survey to find out more about what will constitute future places and spaces for ageing. What will your future look like?

Swipe, type and complete the questionnaire.

Thank you for your participation so far. We now ask you to consider how your future age could be in terms of place, family and occupation. We ask you to take New Agency over Owning your Future.

This is an anonymous and voluntary survey run independently by Sibling Architecture, we will be reviewing the results from this survey to develop new concepts for our future of aged living.

YOU & YOUR AGE	How old are you? How do you feel about your age? How much interaction do you have with elderly people, or people in their old age?
PLACE	<i>Where we will live in our future age is quite possibly the main concern when considering our future lifestyle. Whether it's in the rural, the wilderness, the suburbs or the city; what is it about the place that we live in, that we value most?</i> Where did you grow up? Where do you currently reside? Have you at some point in your life lived overseas? What do you value most in terms of where you live?
OCCUPATION	<i>What will we do with ourselves in these later years of life? How will we be occupied in our future age?</i> What level of education have you have completed? Which of the following best describes your occupation? What does your occupation mean to you now? How long do you see yourself in your current occupation?
FAMILY	Who makes up your family? Which living situation describes yours best? Now, which living situation would be your ideal one? How do you feel about shared living? How well do you know your neighbours?
FUTURE LIVING	What if the home you are living in now, is the one you will grow old in?

To complete on your personal device:
www.siblingnation.net/newagency


Opening Hours:
Tuesday—Friday, 10AM – 5PM
Saturday, 12PM – 5PM
Closed Sunday, Monday and
Public Holidays
Admission is free


Contact:
hello.designhub@rmit.edu.au
www.designhub.rmit.edu.au


Location:
RMIT Design Hub, RMIT University,
Level 2, Building 100,
Corner Victoria and
Swanston Streets,
Carlton, VIC, Australia 3053

For questions regarding the New
Agency survey please contact:
sister@siblingnation.net
www.sibling.net

ISBN 978-0-64840220-6

 RMIT
UNIVERSITY

 CREATIVE VICTORIA

 SIBLING
ARCHITECTURE

Research by Sibling Architecture for this exhibition is supported by the Victorian Government through Creative Victoria's Creators Fund

