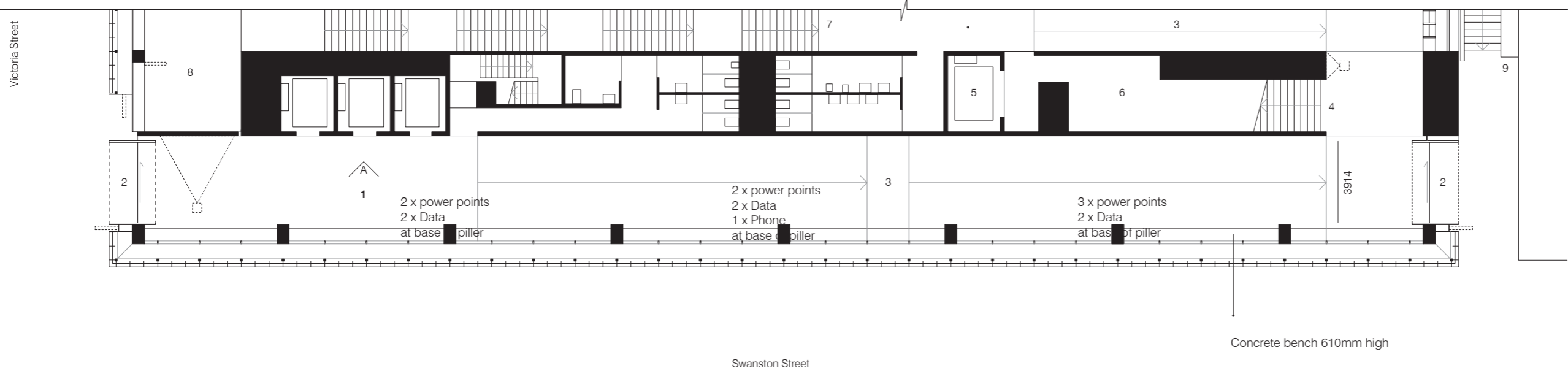
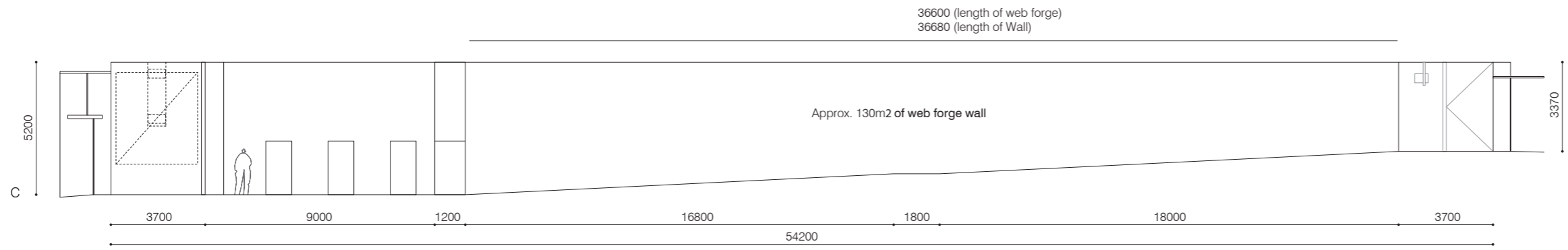
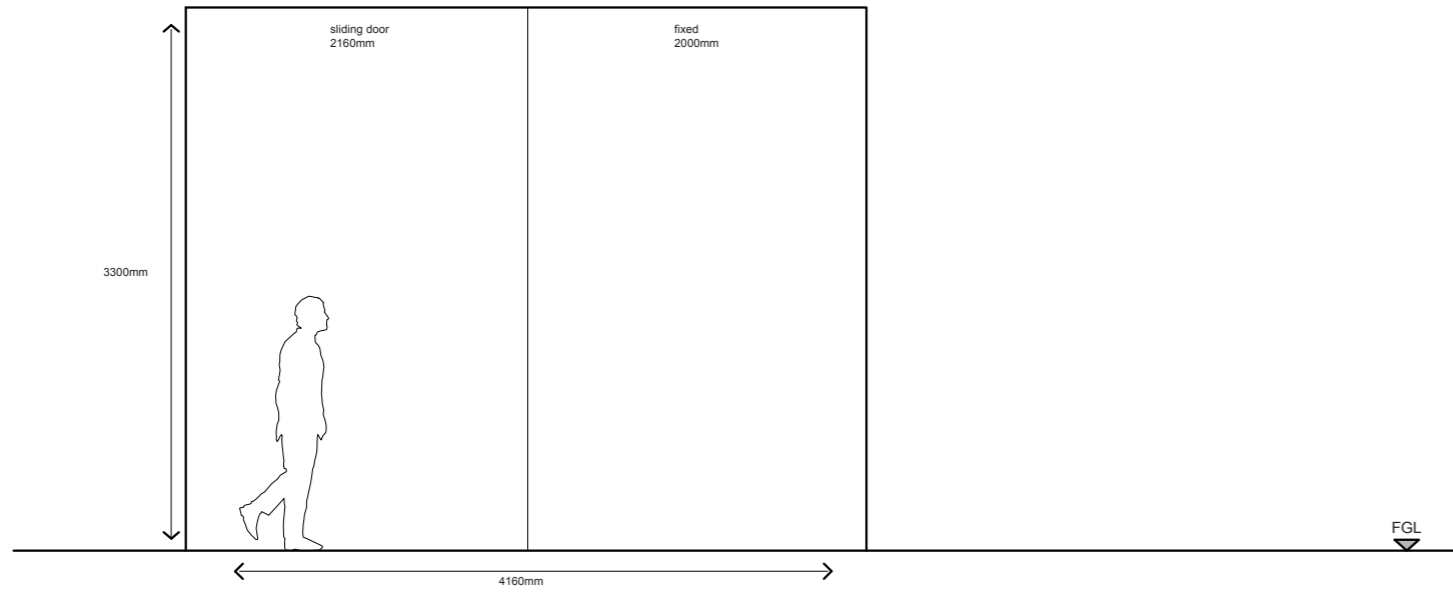


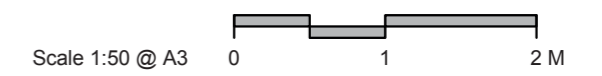
- RMIT Design Hub**
Project Room 1 & 2
 sga: sean godsell architects
- 0 1 2 5m
- legend
- 1 project room 1
 - 2 project room 2
 - 3 entry
 - 4 void
 - 5 reception
 - 6 office
 - 7 store room 1
 - 8 store room 2
 - 9 goods lift
 - 10 forecourt
 - 11 cafe
 - power + data in floor
 - ⊠ projectors



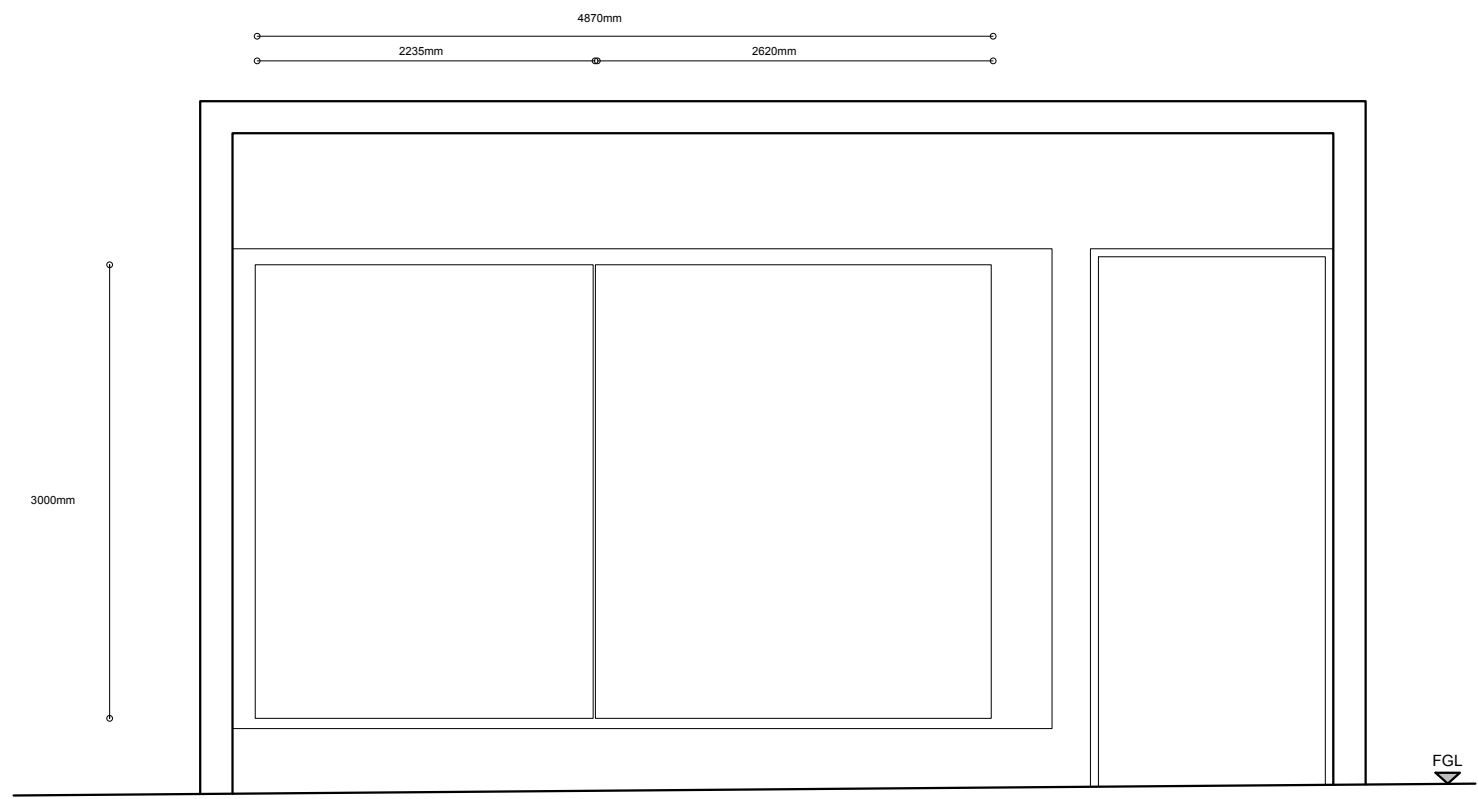
- RMIT Design Hub**
Ground Floor Lobby
sga:sean godsell architects
- 0 1 2 5m
- legend
- 1 lobby
 - 2 entry
 - 3 ramp
 - 4 stair to long rooms + warehouses
 - 5 goods lift
 - 6 furniture store
 - 7 stair 1
 - 8 void
 - 9 to forecourt + cafe
 - power + data in floor
 - ⊗ projectors



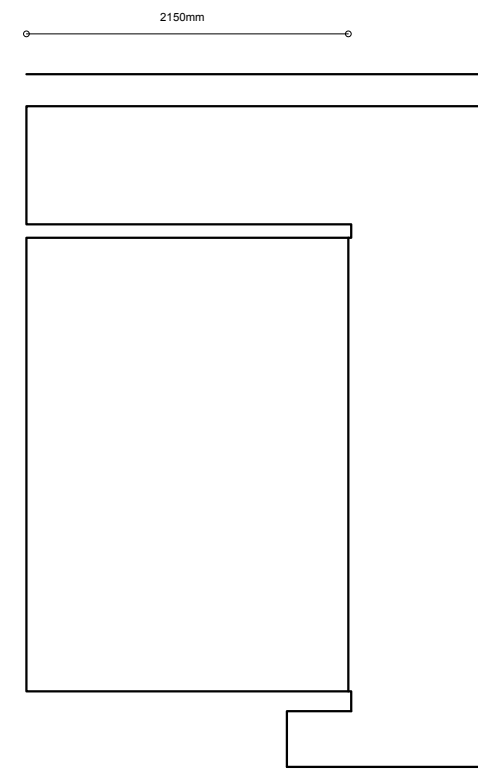
Project Room 2 Door



RMIT Design Hub

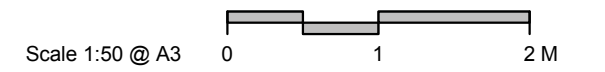


Victoria Street Elevation



Section

RMIT Archives Window



RMIT Design Hub